

Isthmus of Tehuantepec: Mexican South Belt

A new, efficient and secure connection
between eastern and western North America



**GOBIERNO DE
MÉXICO**



HACIENDA
SECRETARÍA DE HACIENDA Y CRÉDITO PÚBLICO



SE
SECRETARÍA DE
ECONOMÍA



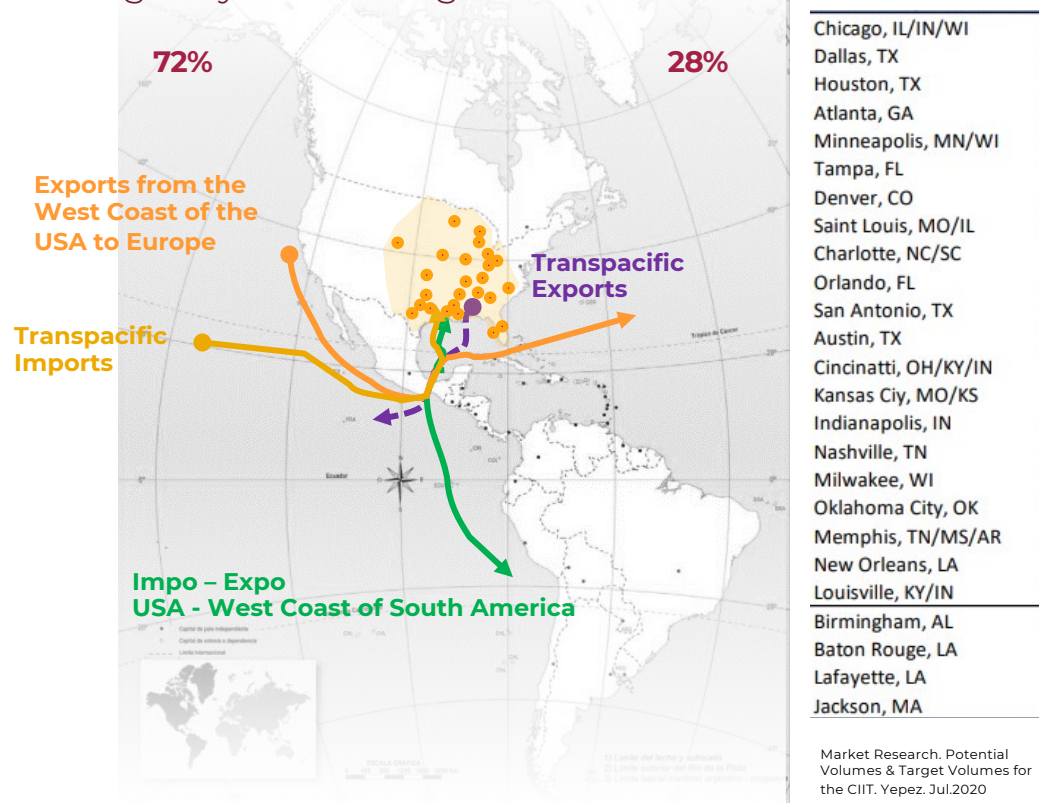
SEMAR
SECRETARÍA DE MARINA



SRE
SECRETARÍA DE
RELACIONES
EXTERIORES

Mexican South Belt

Strategically connecting the Pacific and Atlantic oceans in North America



STRATEGIC POSITION TO STRENGTHEN THE SUPPLY CHAIN



Sectorized exports from the United States to Mexico

by motor transport (2020)

The goods exported from the selected states to Central-South Mexico, added **20 thousand** million dollars.

Selected States (million dollars)

- | | |
|-------------------|-----------------|
| A. North Carolina | 1. Michigan |
| B. South Carolina | 2. Illinois |
| C. Georgia | 3. Indiana |
| D. Alabama | 4. Ohio |
| E. Florida | 5. Pennsylvania |
| F. Tennessee | 6. Kentucky |
| G. Mississippi | |
| H. Louisiana | |



Export value of Florida (2021) (million dollars)

States		Value
NORTH	Baja California	66
	Sonora	24
	Chihuahua	110
	Coahuila	20
	Nuevo León	138
	Tamaulipas	56
CENTER-SOUTH	Ciudad de México y Estado de México	700
	Querétaro	100
	Campeche	90
	Jalisco, Guanajuato y Zacatecas	134

Mexican South Belt

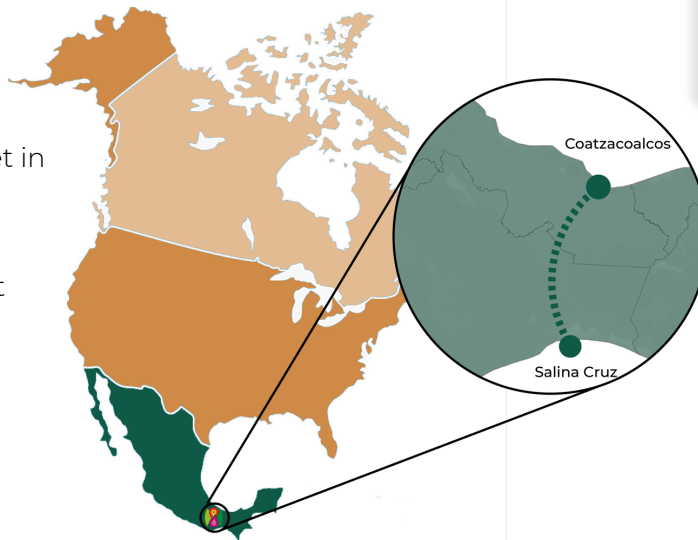
Strategically connecting the Pacific and Atlantic oceans in North America

COMPETITIVE ADVANTAGES



LOGISTICS PLATFORM

- ▶ Access to the fastest growing market in the Americas
- ▶ Capacity to meet 10% of the annual demand in the Eastern and Midwest region of the USA (1.4 million TEUs).
- ▶ Reduction of intermodal costs and transit times.



INDUSTRIAL PLATFORM

- ▶ Value-Chain integration in North America
- ▶ Great industrial potential in a developing region.
- ▶ Implementation of long-term programs to strengthen productive capacities.

LOGISTIC PLATFORM

2 PORTS

Coatzacoalcos & Salina Cruz

Modernization of ports and development of new container terminals for up to 1,400,000 TEUs per year.

1 RAILROAD LINE

The Isthmus Train to connect both ports and integrate them into the National Railway System, North and Central America.

Modernization of Inter-Oceanic Federal Highway 185

- Interconnection with the national highway network
- Completion of road work Mitla – Tehuantepec.
- Expansion of the local road network

PORTS



RAILROAD



HIGHWAY



SERVICES



Interoceanic **fiber optic.**
Natural Gas supply.

AIRPORTS



3 Airports

Minatitlán – Ixtepec – Huatulco
for passengers and cargo

COATZACOALCOS PORT

Coatzacoalcos Integral Port Administration, S.A. de C.V.



Current container services

TRAINSHIP SERVICE

WEEKLY ROUTE:

Port of Coatzacoalcos – Port Mobile, Alabama

TRANSIT TIME:

2-3 days.

SPEED:

14 knots

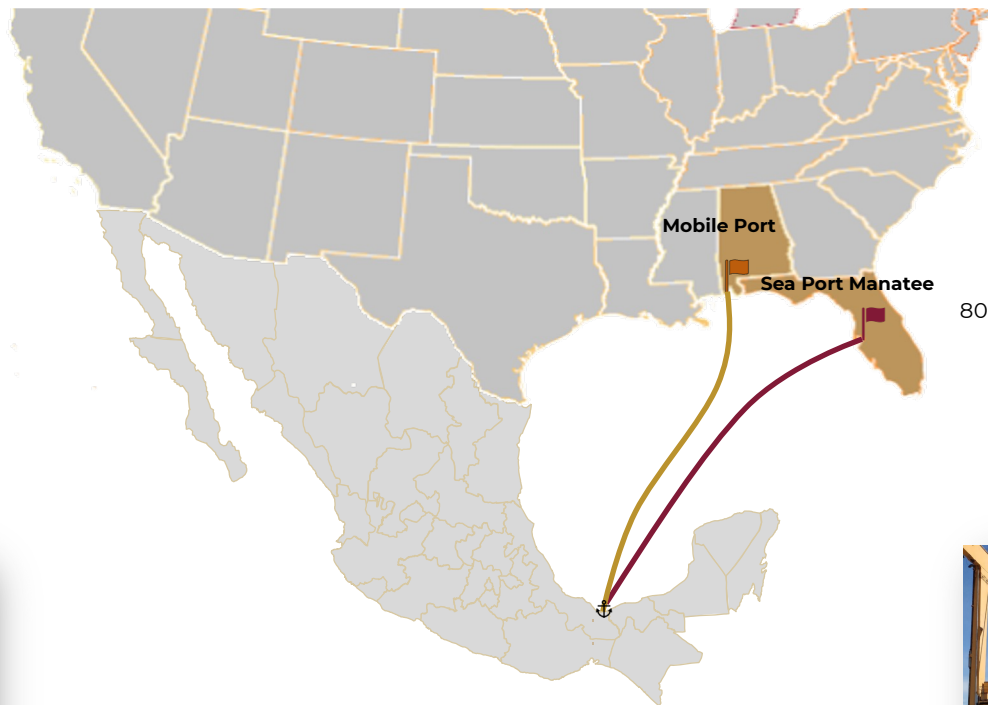
CAPACITY (DOUBLE DECK):

135 wagons.

OPERATOR:



**TERMINALES
TRANSGOLFO**



CONTAINER SERVICE

WEEKLY ROUTE:

Port of Coatzacoalcos – Port Manatee, Palmetto Fl.

TRANSIT TIME:

2 and a half days

CAPACITY:

800 TEUs for refrigerated, dry and liquid cargo.

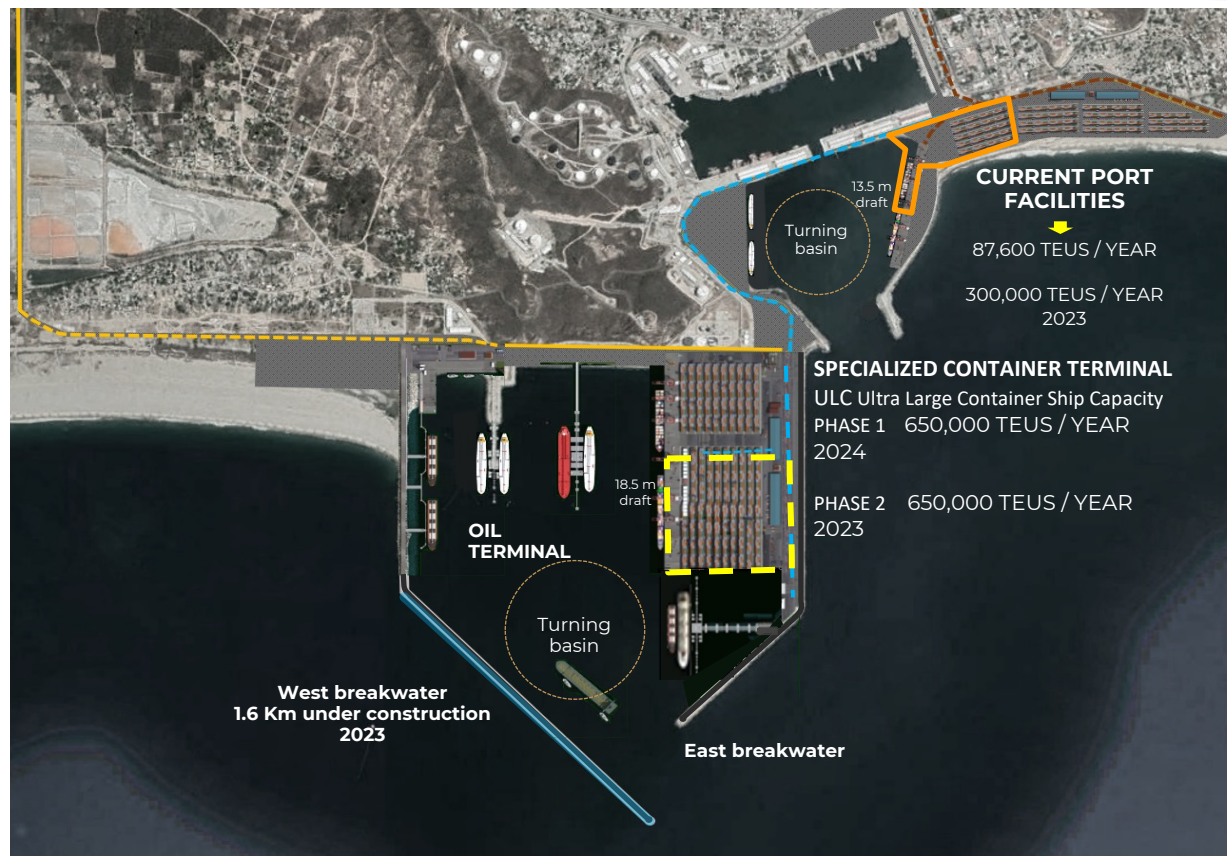
OPERATOR:



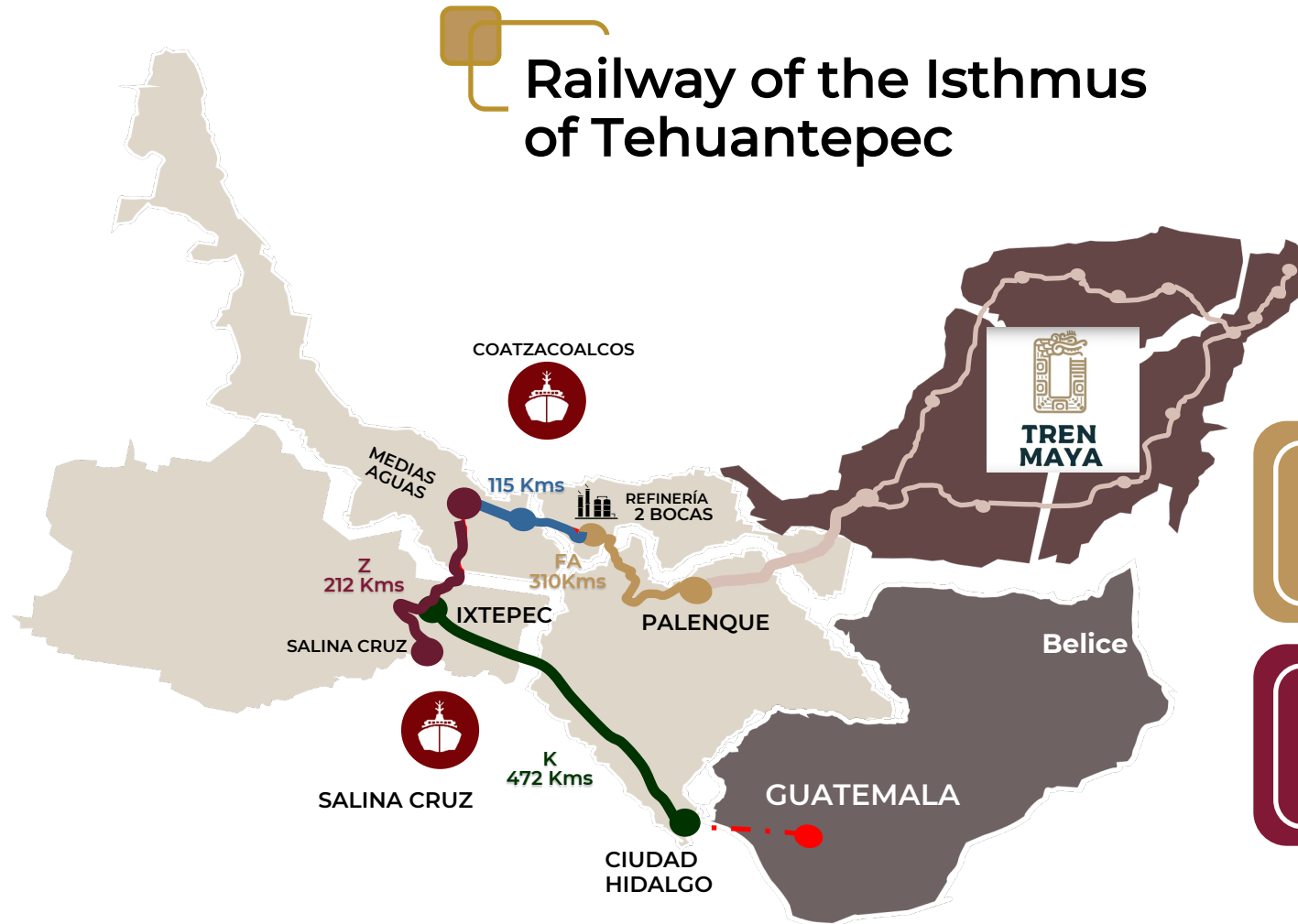


SALINA CRUZ PORT

Salina Cruz Integral Port Administration, S.A. de C.V.



Railway of the Isthmus of Tehuantepec



FIT: 994 KMS

472 Kms – IXTEPEC- Ciudad hidalgo

212kms-Medias aguas - Salina cruz

310 kms - Palenque –el chapo

FERROSUR: 115 KMS

97 KMS - MEDIAS AGUAS -

COATZACOALCOS

18 KMS - COATZACOALCOS - EL CHAPO

Industrial Platform: 10 Industrial Parks



Industrial Park	Area (Ha)
Coatzacoalcos I	266.76
Coatzacoalcos II	129.19
Jáltipan	300
Texistepec	481.58
San Juan Evangelista	363.22
Ixtaltepec (Chivela)	255
Ciudad Ixtepec	412.75
Santa María Mixtequilla	502.72
San Blas Atempa	331.53
Salina Cruz	82.09

3,200 hectares of territorial reserve

THANK YOU

Isthmus of Tehuantepec:

Mexican South Belt



**GOBIERNO DE
MÉXICO**



**CORREDOR
INTEROCEÁNICO**
ISTMO DE TEHUANTEPEC



HACIENDA
SECRETARÍA DE HACIENDA Y CRÉDITO PÚBLICO



SE
SECRETARÍA DE
ECONOMÍA



SEMAR
SECRETARÍA DE MARINA



SRE
SECRETARÍA DE
RELACIONES
EXTERIORES