

PORT OF TAMPICO



MARINA

SECRETARÍA DE MARINA



2022 *Ricardo Flores*
Año de *Magón*
PRECURSOR DE LA REVOLUCIÓN MEXICANA



Tampico is a **River Port**, **ASIPONA** has **903 has.** granted by the Federal Government along **22 km** on both sides of the Panuco River, it includes 4 municipalities: Tampico, Madero in Tamaulipas and Pánuco, Pueblo Viejo in Veracruz.



MARINA
SECRETARÍA DE MARINA



HINTERLAND & FORELAND



MARINA

SECRETARÍA DE MARINA



ADMINISTRACIÓN DEL SISTEMA
PORTUARIO NACIONAL
MARINA



2022 *Ricardo Flores*
Año de *Magón*
PRECURSOR DE LA REVOLUCIÓN MEXICANA



Area of Influence

HINTERLAND

San Luis Potosí	70%
Nuevo León	12%
CDMX	4%
Tamaulipas	3%
Coahuila	2%
Veracruz	1%
Edo. de México	1%
Others	7%

FORELAND

North America	56%
Central & South America	20%
Europe	14%
Caribbean	4%
Asia	4%
Africa	1%

PRODUCTS



MARINA
SECRETARÍA DE MARINA

TRADE WITH FLORIDA DURING 2021

PRODUCT	ORIGIN	DESTINATION	TONNAGE
JUICE CONCENTRATE	Mexico City, North of Veracruz, Nuevo León	Port Manatee	40,907
TILE	Nuevo León	Port Manatee	33,180
WASTE PAPER	Port Manatee	Nuevo León	11,096
SUGAR	Sinaloa	Port Manatee	9,052
MAGNESIUM SULFATE	North of Veracruz	Port Manatee	8,737
AIR CONDITIONERS	Saltillo	Port Manatee	3,064
HOME APPLIANCES	Mexico City	Port Manatee	2,099
FRUITS AND VEGETABLES	Tamaulipas	Port Manatee	1,056
SALT	Tamaulipas	Port Manatee	991
ZINC OXIDE	Nuevo León	Port Manatee	158
CORN FLOUR	Nuevo León	Port Manatee	129
EQUIPMENT AND PARTS	Palmetto	Tamaulipas	47

PUBLIC TERMINALS



MARINA

SECRETARÍA DE MARINA



ADMINISTRACIÓN DEL SISTEMA
PORTUARIO NACIONAL
MARINA



2022 *Ricardo Flores*
Año de Magón
PRECURSOR DE LA REVOLUCIÓN MEXICANA

PUBLIC TERMINALS



MARINA
SECRETARÍA DE MARINA

TUM I

Tampico Terminal Marítima



Piers 10 and 11

TUM II

ASIPONA TAMPICO / CICE



Piers from 5 through 9

MULTIPURPOSE TERMINAL I

Tampico Terminal Marítima, S.A. de
C.V.
(T11)

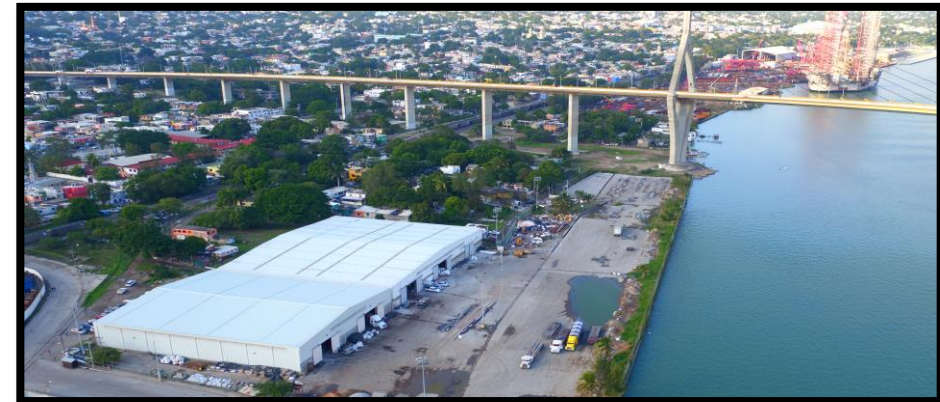


MARINA
SECRETARÍA DE MARINA

The Multipurpose Terminal I, operated by Tampico Terminal Marítima includes Piers 10 and 11, has the capacity to operate various types of cargo, such as: general and Project cargo, fertilizers, agricultural and mineral bulks and containers.

Current Infrastructure

- ✓ 2 docking positions along **576 m.**
- ✓ **66,000 m2** of patios in the bonded area.
- ✓ **7,500 m2** of external warehouses adjacent to bonded area.
- ✓ **21,334 m2** of external patios adjacent to the bonded area.



MULTIPURPOSE TERMINAL II

Administración de Servicios
Comunes Portuarios, S.A. de
C.V. (CICE)



MARINA
SECRETARÍA DE MARINA

The Multipurpose Terminal II operated by Administración de Servicios Comunes Portuarios includes Piers from 5 through 9, this Terminal has specialized equipment for the operation of a big diversity of cargo.

Current Infrastructure

- ✓ 5 docking positions along **921 m.**
- ✓ **21,617 m²** of warehouses.
- ✓ **1,031 m²** of shed.
- ✓ **24,701 m²** of patios.
- ✓ Railway tracks concessioned to **KCSM.**
- ✓ Public truck scale with capacity of **100 ton.**



PORT AREA PLANNED TO BE DEVELOPED



MARINA
SECRETARÍA DE MARINA

Tampico has conditions for the operation of cabotage and short sea shipping as well as offshore activities and for the establishment of Industrial Maritime Terminals. For this reason, the Port of Tampico opens the opportunity for private investment to generate the necessary infrastructure for the reception and mobilization of cargo.

Galeana Maritime Terminal features:

- ✓ Located at 2.7km from the breakwaters.
- ✓ 2 docking positions along 592 m.
- ✓ 42 ft. potential draft.



ASIPONA TAMPICO
THANK YOU



MARINA
SECRETARÍA DE MARINA



2022 *Ricardo Flores*
Año de *Magón*
PRECURSOR DE LA REVOLUCIÓN MEXICANA



ADMINISTRACIÓN DEL SISTEMA
PORTUARIO NACIONAL
MARINA

CONTACT

comercializacion@puertodetampico.com.mx

www.puertodetampico.com.mx

Tel.: (833) 241 1400



MARINA
SECRETARÍA DE MARINA